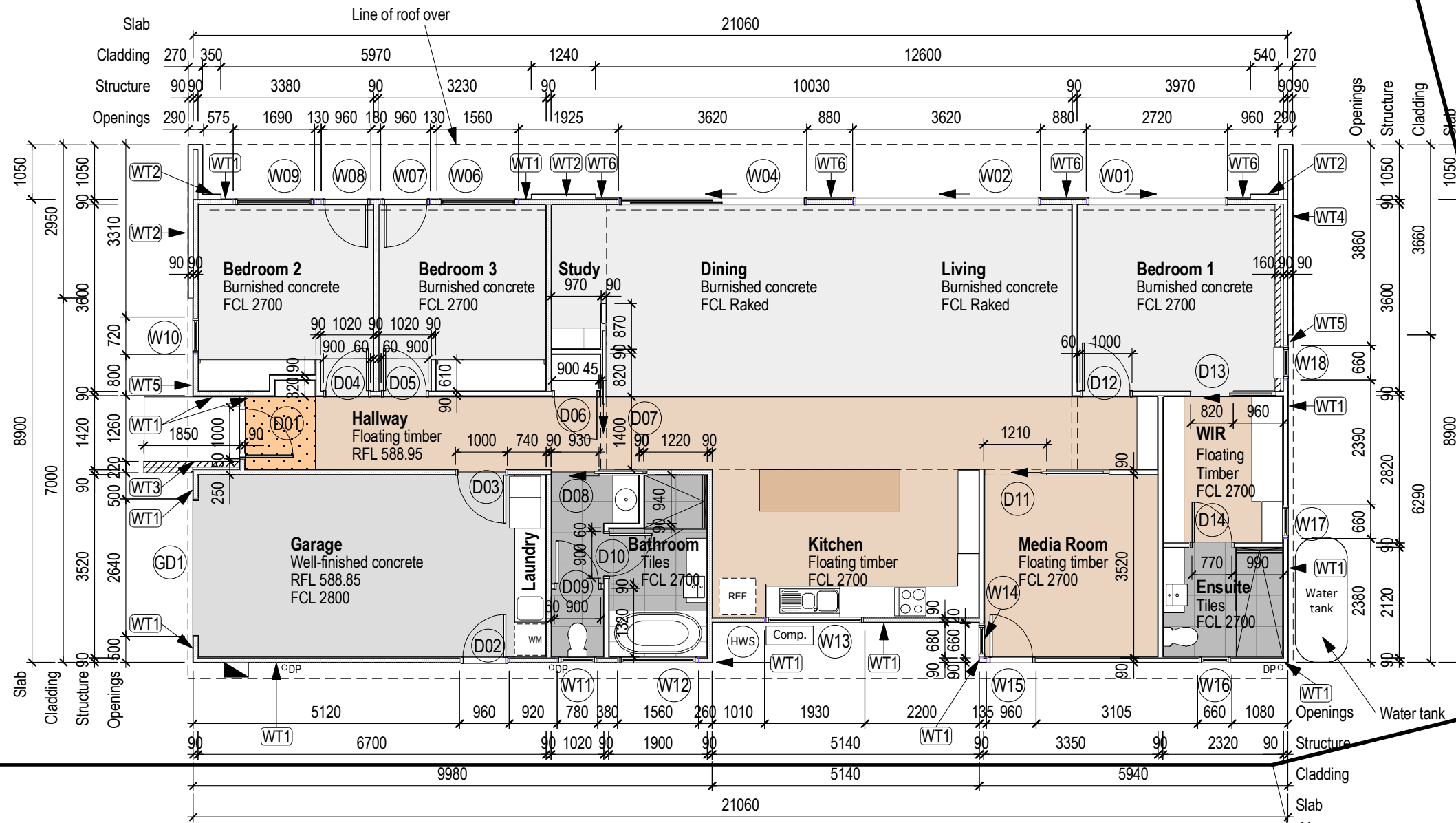


Area

Ground Floor: 158sqm
Garage: 24sqm

Total Ground Floor Area: 182sqm

Block Size: 538sqm

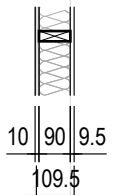


Energy Efficient Demonstration Home: Floor Plan

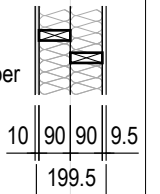
Scale 1:100 on A3

Key Finishes

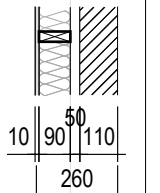
External Wall Type 1-WT1:
Plasterboard internal, timber frame with R2.5 insulation, membrane, panel board (B) external



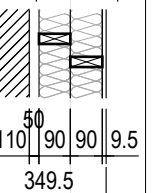
External Wall Type 2-WT2:
Plasterboard internal, timber frame with R2.5 insulation, timber battens with R2.5 insulation, membrane, panel board (A) external



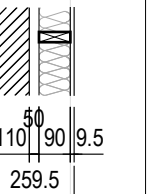
External Wall Type 3-WT3:
Plasterboard internal, timber frame with R2.5 insulation, membrane, air-gap, brick cladding external



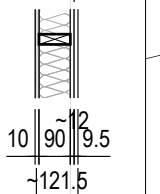
External Wall Type 4-WT4:
Reverse brick veneer internal, air-gap, timber frame with R2.5 insulation, timber battens with insulation, membrane, panel board (A) external



External Wall Type 5-WT5:
Reverse brick veneer internal, air-gap, timber frame with R2.5 insulation, membrane, panel board (B) external



External Wall Type 6-WT6:
Plasterboard internal, timber frame with R2.5 insulation, membrane, timber battens to align with glazed sliding doors, panel board (B) external



Internal walls:
- Plasterboard, timber stud (sound insulation where indicated), plasterboard

Roof:
Plasterboard internal, metal battens, timber structure with R4.1 insulation, metal battens, foil + R1.3 insulation, metal roof

Floors:
Concrete with the following finishes over:
- Burnished concrete
- Tiles on concrete
- Floating timber over concrete

This version of the Your Home Design For Place 'Banksia' House Design has been modified by Jodie Pipkorn and Paul Nagle - www.commonsss.com.au. It is not copyright and is made freely available for you to use and modify.

Date: 26.08.22