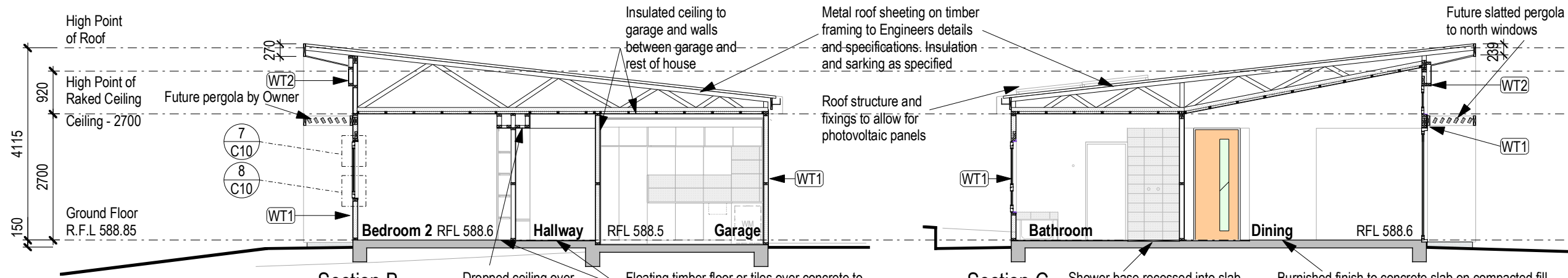


Section A
Scale 1:100 on A3

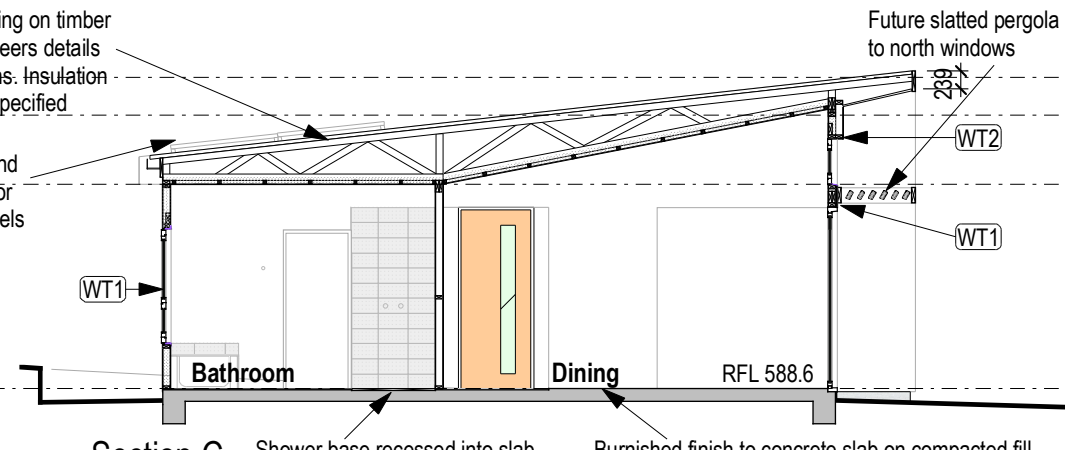
Floating timber floor or tiles over concrete to Engineers details. Waterproof membranes, compacted sand and insulation under to Building Code of Australia requirements



Section B
Scale: 1:100 on A3

Dropped ceiling over cupboards and bedroom doorways

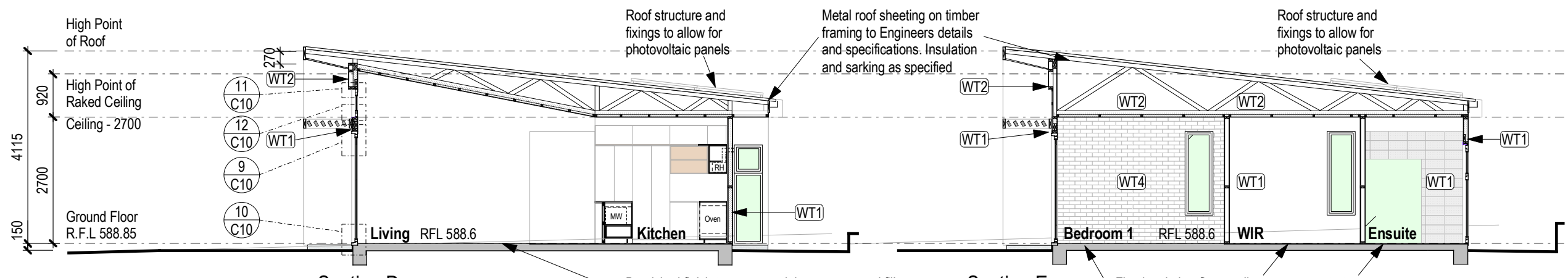
Floating timber floor or tiles over concrete to Engineers details. Waterproof membranes, compacted sand and insulation under to Building Code of Australia requirements



Section C
Scale: 1:100 on A3

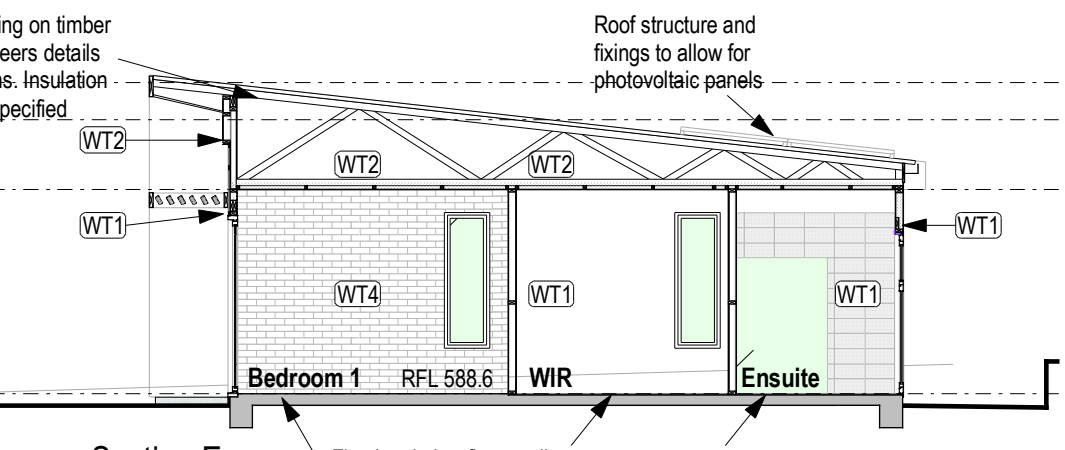
Shower base recessed into slab

Burnished finish to concrete slab on compacted fill and footings to Engineers details. Waterproof membranes, compacted sand and insulation under to Building Code of Australia requirements



Section D
Scale: 1:100 on A3

Burnished finish to concrete slab on compacted fill and footings to Engineers details. Waterproof membranes, compacted sand and insulation under to Building Code of Australia requirements



Section E
Scale: 1:100 on A3

Floating timber floor or tiles over concrete to Engineers details. Waterproof membranes, compacted sand and insulation under to Building Code of Australia requirements

Key Finishes	
External Wall Type 1-WT1: Plasterboard internal, timber frame with insulation, membrane, panel board (B) external	10 90 9.5 109.5
External Wall Type 2-WT2: Plasterboard internal, timber frame with insulation, timber battens with insulation, membrane, panel board (A) external	10 90 90 9.5 199.5
External Wall Type 3-WT3: Plasterboard internal, timber frame with insulation, membrane, air-gap, brick cladding external	10 90 50 110 260
External Wall Type 4-WT4: Reverse brick veneer internal, air-gap, timber frame with insulation, timber battens with insulation, membrane, panel board (A) external	50 90 90 9.5 349.5
External Wall Type 5-WT5: Reverse brick veneer internal, air-gap, timber frame with insulation, membrane, panel board (B) external	50 90 9.5 259.5
External Wall Type 6-WT6: Plasterboard internal, timber frame with insulation, membrane, timber battens to align with glazed sliding doors, panel board (B) external	10 90 12 9.5 -121.5
Internal walls: - Plasterboard, timber stud (insulation where indicated), plasterboard	
Roof: Plasterboard internal, timber battens, timber structure with insulation, battens, foil + R1.3 insulation, metal roof	
Floors: Concrete with the following finishes over: - Burnished concrete - Tiles - Floating timber over concrete	

- Notes:
1. At all times work is to be carried out in a careful way in accordance with best trade practice.
 2. All work is to comply with the Building Code of Australia.
 3. If an Australian Standard exists which is relevant to the work, then the work is to comply with that standard.
 4. Dimensions on drawings are to be taken in preference to scale.
 5. Throughout the works check all dimensions on site and bring any discrepancies to the attention of the Owner before carrying out any further work.

A	Updated - as built	12.09.22			
-	Issued for building approval	19.10.19			
Number:	Revision:	Date:	Number:	Revision:	Date:

Project: **3 Folvig Close, Strathnairn Ginninderry, West Belconnen**

Owner: **Paul Nagle**

Drawing: **Sections**

Date: 17.04.17

C08 A